

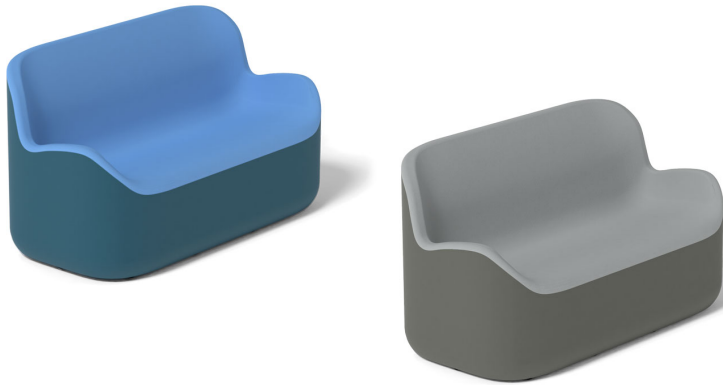
# SEAL 2-SEATER

1SAS2-00

840H | 1500W | 700D (mm)

Seat Height: 380mm

Weight: 45kg



UK Registered Design No. 6131312 / 6131313



## KEY FEATURES

- Designed without seams or gaps to minimise concealment opportunities
- Anti-concealment base with non-accessible fixings
- Subtle arms support staff in safe de-escalation practices
- Water-resistant, hygienic outer skin which can be easily cleaned and dried for re-use
- Seat static load tested to 227kg

Azur Blue:



London Grey:



## MATERIAL/FABRICATION

Made without seams or gaps, Seal is a minimalist seating range designed to reduce risk and maximise safety in challenging environments. Seal's soft foam core is protected by a water-resistant outer skin, creating a hygienic surface which can be easily cleaned and dried, ready for re-use.

SOFT-TEC™ is a 2-part molded polyurethane material (internal foam density 80kg/m<sup>3</sup>) which combines soft comfort with resistance and durability. It is extremely resistant to wear, tearing, shocks, laceration and abrasions.

## TEST STANDARDS

- Static load test (seat) 227kg 45)
- Flame retardant SOFT-TEC™ material (BS 5852-2:1982 - Crib 5)

## OPTIONS

- Additional weighted 2-Seater option available (90kg)
- Also available as a Chair (see below)

1SAS1-00  
840H | 750W | 700D (mm)  
Seat Height: 380mm  
Weight: 26kg



## COLOUR/FINISH

Available in dual-tone Azur Blue or London Grey colour options

## DELIVERY

Leadtime approx. 6-8 weeks

## ASSEMBLY

Arrives assembled and ready to use

## INSTALLATION/FITTING

No fitting required

## MAINTENANCE

SOFT-TEC™ is easily cleaned with a 0.1% sodium hypochlorite solution as recommended for healthcare settings. The material is lead and phthalate-free, resistant to mildew and complies with Reach Art. 33 for presence of SVHC. For recommended cleaners and further instructions please contact our team at [sales@pineapplecontracts.com](mailto:sales@pineapplecontracts.com)

## WARRANTY

7 year guarantee

T

+44 (0)1622 237830

E

[sales@pineapplecontracts.com](mailto:sales@pineapplecontracts.com)

W

[uk.pineapplecontracts.com](http://uk.pineapplecontracts.com)

# Pineapple

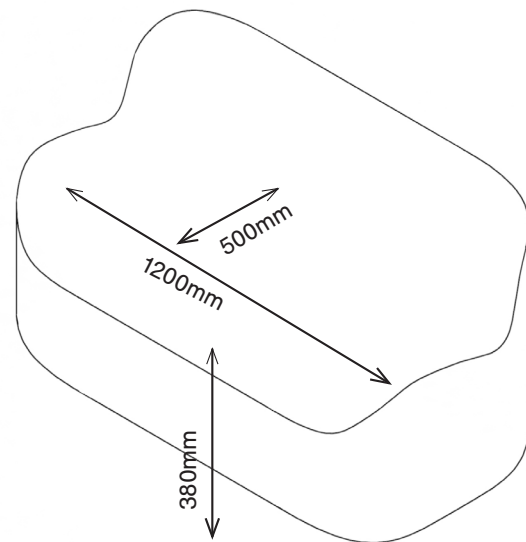
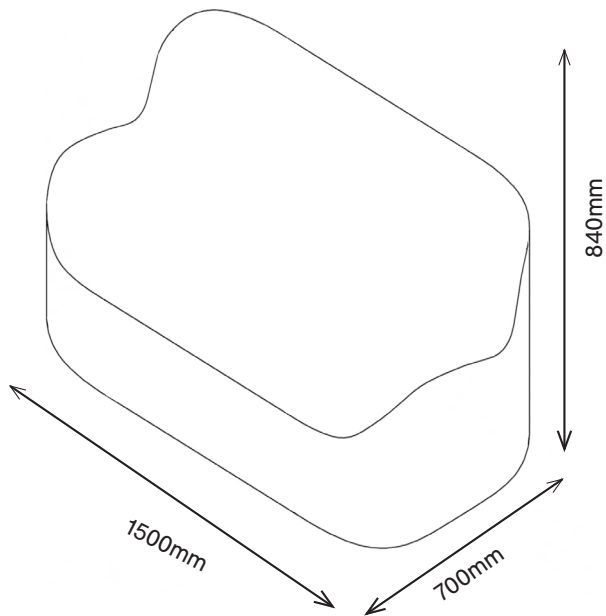
# SEAL 2-SEATER

1SAS2-00

840H | 1500W | 700D (mm)

Seat Height: 380mm

Weight: 45kg



T

+44 (0)1622 237830

E

[sales@pineapplecontracts.com](mailto:sales@pineapplecontracts.com)

W

[uk.pineapplecontracts.com](http://uk.pineapplecontracts.com)

**Pineapple**