



KEY FEATURES

- Standard reinforcement provides strength and durability
- Versatile modular design helps you make the most of your space
- Can be used individually or in multiples
- Plinth base to prevent dust and dirt gathering underneath
- Static load tested up to 110kg



MATERIAL/FABRICATION

Doorne is a modular seating solution that is constructed from plywood and softwood with a solid Birch plinth base. Doorne offers a flexible seating solution that can be configured to suit any small or larger space. Furniture glides on the plinth base allows for ease of movement, and ensures the floor is protected from potential damage.

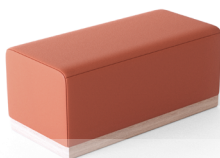
TEST STANDARDS

- Strength and stability (EN 16139:2013 Test Level 2)
- Static load tested up to 110kg
- All upholstery flammability rated to Crib 5 or Crib 7

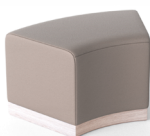
OPTIONS

- Available in standard or Doorne Plus
- Also available in a double and curved modular seating standard option (as below)

Doorne double
1DRM2-100
450H | 900W | 450D (mm)
Weight: 16kg



Doorne 45° curved
1DRM3-100
450H | 730W | 450D (mm)
Weight: 11.5kg



COLOUR/FINISH

Lacquered solid Birch plinth

FABRIC

Available in a wide choice of hard wearing, water-resistant fabrics and leather effect vinyl upholstery options.

ASSEMBLY

Arrives assembled and ready to use

INSTALLATION/FITTING

No fitting required

MAINTENANCE

See upholstered furniture section of our care guidelines for fabric care instructions <https://uk.pineapplecontracts.com/upholstery/care-guidance/>

WARRANTY

7 year guarantee (does not include fabric/vinyl)