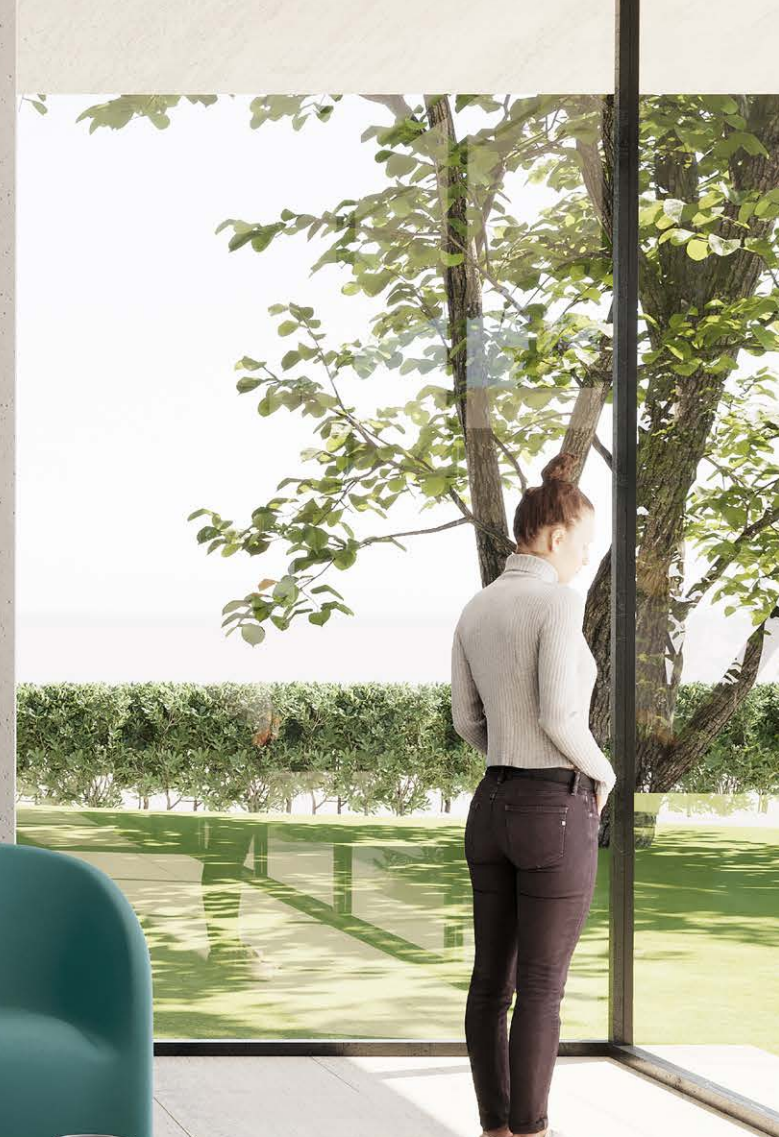


RYNO<sup>®</sup>

2-seater



Pineapple



When we first developed our Ryno® range, our goal was to create furniture which combined dependable safety and durability with a warm and welcoming aesthetic.

The newest addition to the Ryno range - the 2-seater - continues to embody this ethos. Behind its slender profile and soft curves, there lies a strong interior construction which is built to withstand the rigours of daily life in a psychiatric ward or custodial environment.

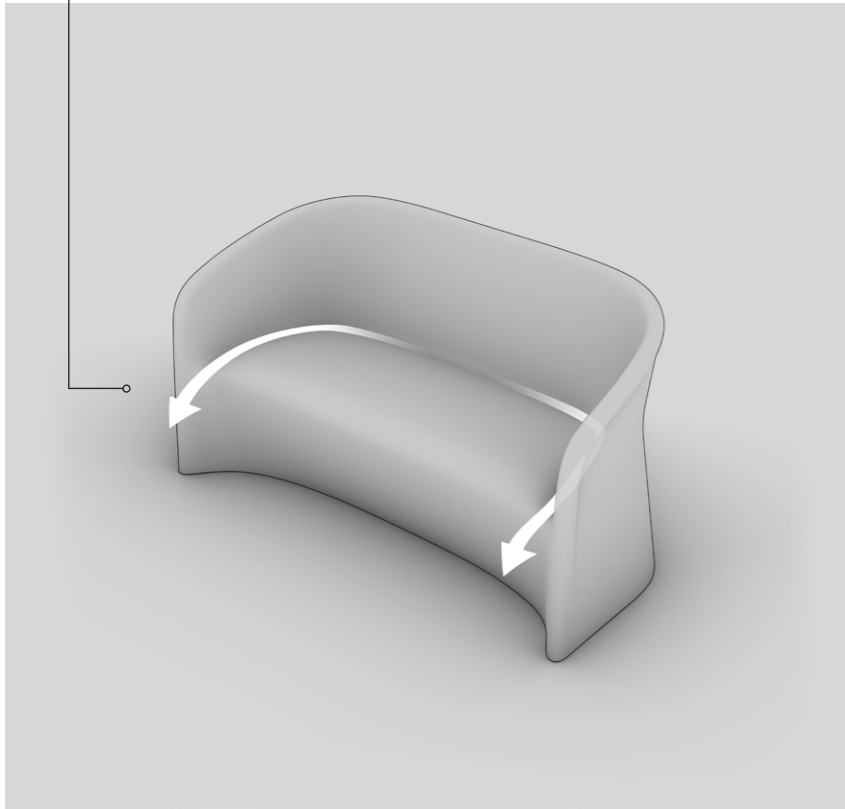
The wide stance of the 2-seater allows users to sit side-by-side with their peers and caregivers, helping to build relationships and support therapeutic aims.

The generous width of the product also comfortably supports bariatric users while avoiding the stigma that may associated with dedicated bariatric furniture.

The sloped arms and low back height are designed to minimise ligature risks, and for added safety the product is heavily weighted to 123kg as standard (lightweight model also available).


# DESIGNED FOR PEACE OF MIND

Integrated drainage channel allows water run-off



## Lifetime guarantee

Like all Ryno products the 2-seater is protected by a lifetime guarantee against manufacturing faults, giving you total peace of mind.



## Waterproof

Made from a single piece of rotationally moulded polyethylene with no joins, the Ryno 2-seater is totally waterproof.



## Damage resistant

The single-piece construction helps to distribute stresses throughout the product, making it extremely resistant to damage.



## Hygienic

Ryno's polyethylene material is naturally resistant to bacteria and bedbugs by providing no organic matter for bacteria to feed on.



## Recyclable

Made from 100% polyethylene, Ryno products can be returned to Pineapple at the end of their life to be recycled. Our table bases are made from 100% recycled content.




*Shaped to reduce  
ligature risks*






# RYNO<sup>®</sup> 2-SEATER




Seat static weight tested to 




**Ryno 2-seater**  
1RY2-123  
810H | 1496W | 674D (mm)  
Seat height: 435mm  
Weight: 123kg




Lifetime guarantee




Weighted to deter misuse




Fire retardant



100% LDPE



Weatherproof



Floor fixed option

KEY FEATURES		OPTIONS
<div>→ Heavily weighted to 123kg standard to deter misuse (other weight options available)</div> <div>→ Integrated drainage channel allows water run-off</div> <div>→ Sloped arms and low back designed to minimise ligature risks</div> <div>→ Ergonomically designed to give excellent comfort</div> <div>→ Hygienic wipe-clean surface</div>	<div>→ Waterproof, UV stabilised material - suitable for outdoor use</div> <div>→ Strength and stability tested for severe contract use</div>	<div>→ Floor fixing solution</div> <div>→ Lightweight model (35kg)</div> <div>→ Anti-concealment base plate</div> <div>→ 13 versatile shell colours</div> <div><div><div><div></div><div></div><div></div><div></div><div></div></div><div>→ Core colours</div></div><div><div></div><div></div><div></div><div></div><div></div><div></div><div></div><div></div></div></div>
	<div>One-piece design cannot be disassembled or weaponised</div>	





# See for yourself...

To arrange a demonstration or book a visit to our showroom, please call +44 (0)1622 237830

Pineapple, Westmead, Aylesford, Maidstone, Kent, ME20 6XJ

T

+44 (0)1622 237830

E

[sales@pineapplecontracts.com](mailto:sales@pineapplecontracts.com)

W

[uk.pineapplecontracts.com](http://uk.pineapplecontracts.com)

# Pineapple