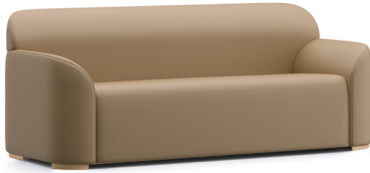


MAGNA 2.0 3-SEATER

ECO AUDIT

7 YEARS
Life
warranty

145KG CO_{2e}
carbon
(per year)



Materials

Component	Material	Weight	Carbon (kg CO ₂)	End of life plan
1	Plywood	35.66kg	24	Downcycle
2	Chipboard	7.01kg	4.43	Downcycle
3	Pinewood	9.0kg	2	Downcycle
4	Fiberboard	0.32kg	0.29	Recycle
5	Solid Birch	1.34kg	0	Downcycle
6	PVC	4.5kg	11	Recycle
7	Chip Foam	3.4kg	48	Downcycle
8	PU Foam	10kg	0	Downcycle

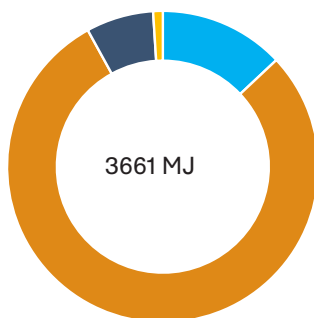
Summary

Phase	Total
Product (kg CO ₂)	145kg CO _{2e}
Total energy (MJ)	3661 MJ
Recycled content (%)	0%
Recyclability (%)	9%
Total packaging (kg)	1kg CO ₂
Life warranty	7 years
FSC	Yes

Additives	Yes/No
Flame retardant	Yes (fabric & foam)
UV stabiliser	No
Anti-microbial	No
Other	No

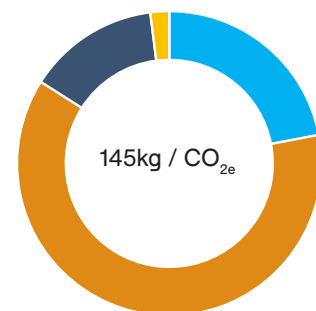
Energy footprint [%]

Transport	●	13
Materials	●	79
Manufacturer	●	7
Disposal	●	1
Total		3661 MJ



Carbon footprint [%]

Transport	●	22
Materials	●	62
Manufacturer	●	14
Disposal	●	2
Total		145kg / CO_{2e}



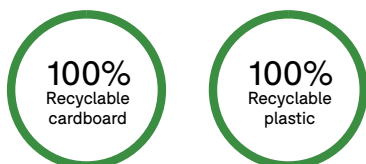
MAGNA 2.0 3-SEATER

ECO AUDIT

Chemical compliance

Name	Yes/ No
REACH	✓
RoHs	✓
Free from PVC, heavy metals, phthalates	✓
Free from Persistent Organic Pollutants (POPs)	✓

Packaging information



As part of our delivery service, packaging is collected, returned to Pineapple and recycled accordingly.

Afterlife plan

Disassembly instructions: Remove fabric and foam from the chair frame, remove feet for recycling.

Replace plan: Replace fabric if stained or torn

Repair plan: Fabric, foam and feet can be replaced

Environmental statement

Our commitment to sustainability is demonstrated in our **ISO 14001:2015** award, our **FSC® Chain of Custody certificate INT-COC-001353** and licence code **FSC-C015370**. In addition, we are certified under PEFC Chain of Custody licence code **PEFC/16-37-982**.

The environment is everyone's responsibility and we do our part by endeavouring that all of our timber originates from responsibly managed forests. As supporters of the tradition of good forest management, we purchase only suitably certified timber wherever possible.

Products in our Ryno® range are made from 99% low-density polyethylene which is completely recyclable. When the products reach the end of their useful life, they can be returned to us, ground down into small granules and used to create new pieces of furniture.

Environmental product analysis

Data collected has been analysed and calculated by the Materials & Sustainability team.

Certification

Description	Accreditation
Quality Assurance	ISO 9001 (UKAS accredited)
Environmental Management	ISO 14001 (UKAS accredited)
Sustainability	FISP
Chain of Custody	FSC® and PEFC

