

# RYNO<sup>®</sup> WALL BED

1RY2-123

480H | 2050L | 1010W (mm)

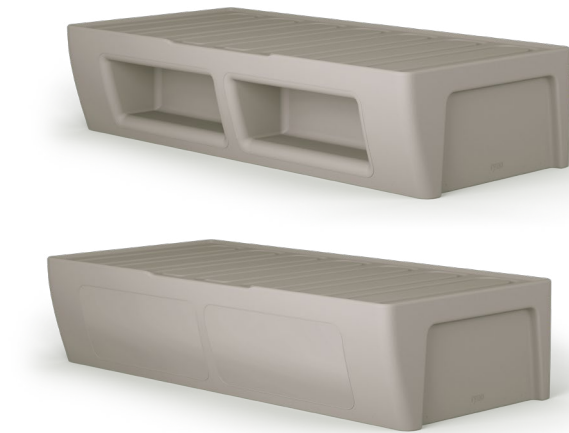
Base Footprint: 2050L | 890W (mm)

Weight: 60kg

## KEY FEATURES

- One-piece design is totally water-resistant, damage-resistant and anti-concealment
- With and without bed storage options
- Straight side allows the bed to be fitted flush against a wall
- Compatible with covered flooring (please specify at point of order)
- 100% waterproof construction with hygienic wipe-clean surface
- Contains 40% recycled content
- Strength and stability tested for severe contract use

→ Core colour



## MATERIAL/FABRICATION

The Ryno Wall Bed is compatible with covered flooring and can be modified to be securely fitted to prevent concealment opportunities and reduce ligature risks. Whilst the flared side provides improved patient mobility and access to caregivers.

The Ryno Wall Bed has no foam filling and is designed using a rotationally moulded, durable polyethylene, one-piece construction, which provides excellent strength and stability. Flamed, textured finish further strengthens the fire-retardant, water-resistant, UV-stabilised shell. Item is fully recyclable as polyethylene can be melted down to create a whole new product.

## TEST STANDARDS

- EN 1725:1998 (corresponding to a 36 stone user)
- Ryno material UL94 Fire test
- 500kg Static Load testing to the centre of the base

## COLOUR/FINISH

[Core colours] Moonwalk Grey [Other available colours] Granite, Cool Green, Icon Purple, Epic Blue, Lime Green, Vegas Yellow, Thunder Grey, Dusty Blue, Dusty Pink, Teal, Violet Purple, Warm Terracotta and OceanGreen.

## OPTIONS

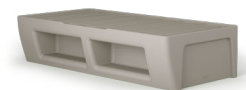
- Floor fixing solution
- Anti-concealment base plate
- Available in OceanGreen colour (weight: 65kg)
- Ryno wall bed with and without storage is available (see below)

1RY2-123

480H | 2050L | 1010W (mm)

Base Footprint: 2050L | 890W (mm)

Weight: 60kg



1RY2-123

480H | 2050L | 1010W (mm)

Base Footprint: 2050L | 890W (mm)

Weight: 60kg



T

+44 (0)1622 237830

E

sales@pineapplecontracts.com

W

uk.pineapplecontracts.com

Pineapple

# RYNO® WALL BED

## ASSEMBLY

Arrives assembled and ready to use.

## DELIVERY

Stocked in 1 colour- Moonwalk Grey and has a 8 week leadtime. For more information on other non-stocked non-core colours/ leadtimes please contact our sales team.

## INSTALLATION/FITTING

This product can be used free-standing or floor fixed. Please contact us for instructions.

## MAINTENANCE

Avoid using abrasive materials or cleaning agents, solvents, steam cleaning or jet washing. Use bleach and chlorine disinfectant with caution and avoid placing in close proximity to sources of heat. Read more here <https://uk.pineapplecontracts.com/upholstery/care-guidance/>

## WARRANTY

Lifetime guarantee against all manufacturing faults

## DISCLAIMER

Extreme temperature changes (e.g. a cold night followed by a warm sunny day) may cause air inside the product to expand, causing short-term changes to its shape .

Due to the nature of the rotational moulding process, flat surfaces on Ryno® products may feature slight undulations which do not detract from the product's strength or durability.

There will be some colour variation from batch to batch this is the nature of the reclaim polymer.

T

+44 (0)1622 237830

E

sales@pineapplecontracts.com

W

uk.pineapplecontracts.com

Pineapple