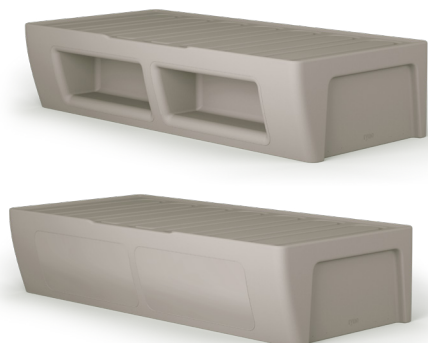


KEY FEATURES

- One-piece design is totally water-resistant, damage-resistant and anti-concealment
- With and without bed storage options
- Straight side allows the bed to be fitted flush against a wall
- Compatible with coved flooring (please specify at point of order)
- 100% waterproof construction with hygienic wipe-clean surface
- Polyethylene material is 100% recyclable
- Strength and stability tested for severe contract use



MATERIAL/FABRICATION

The Ryno Wall Bed is compatible with covered flooring and can be modified to be securely fitted to prevent concealment opportunities and reduce ligature risks. Whilst the flared side provides improved patient mobility and access to caregivers.

The Ryno Wall Bed has no foam filling and is designed using a rotationally moulded, durable polyethylene, one-piece construction, which provides excellent strength and stability. Flamed, textured finish further strengthens the fire-retardant, water-resistant, UV-stabilised shell. Item is fully recyclable as polyethylene can be melted down to create a whole new product.

TEST STANDARDS

- EN 1725:1998 (corresponding to a 36 stone user)
- Ryno material UL94 Fire test
- 500kg Static Load testing to the centre of the base
- Antibacterial Activity MOD iso 11196:2011
- Ryno ISO 11925 (2020)

OPTIONS

- Floor fixing solution
- Anti-concealment base plate
- Available in OceanGreen colour (weight: 65kg)

OPTIONS CONTINUED

- Ryno wall bed with and without storage is available

1RYAW-201

480H | 2050L | 1010W (mm)

Base Footprint: 2050L | 890W (mm)

Weight: 60kg



COLOUR/FINISH

COPE COLOURS



Moonwalk Grey



Dusty Blue



Cool Green



Granite



Epic Blue



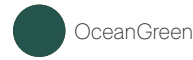
Icon Purple



Thunder Grey



Dusty Pink



OceanGreen



Sand



Teal



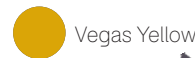
Warm Terracotta



Violet Purple



Lime Green



Vegas Yellow

these colours have a minimum order quantity of 12 units

NON-COPE COLOURS

DELIVERY

[core colours] leadtime 5 weeks | [non-core colours] will have longer leadtimes and additional costs

ASSEMBLY

Arrives assembled and ready to use

INSTALLATION/FITTING

Additional weighting can be carried out prior to delivery. Please advise if floor fixing is required when ordering as fixed items are made differently. All products must be fitted carefully following Pineapple's product instructions (where available). If not, any guarantee is at risk of becoming null and void

MAINTENANCE

Avoid using abrasive materials or cleaning agents, solvents, steam cleaning or jet washing. Use bleach and chlorine disinfectant with caution and avoid placing in close proximity to sources of heat. Read more here <https://uk.pineapplecontracts.com/upholstery/care-guidance/>

WARRANTY

Lifetime guarantee against all manufacturing faults

DISCLAIMER

Extreme temperature changes (e.g. a cold night followed by a warm sunny day) may cause air inside the product to expand, causing short-term changes to its shape .

Due to the nature of the rotational moulding process, flat surfaces on Ryno® products may feature slight undulations which do not detract from the product's strength or durability.