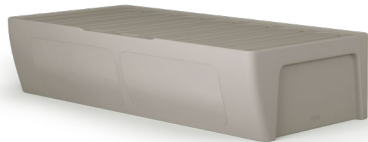
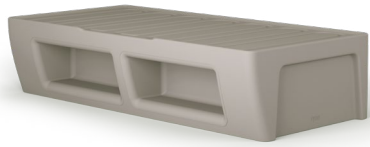


RYNO[®] WALL BED

ECO AUDIT



25 YEARS Life warranty	Fire retardant
198KG CO ₂ carbon (per year)	100% LDPE
UK Manufactured	100% Recyclable

Materials

Component	Material	Weight	Carbon (kg CO ₂)	End of life plan
1	LDPE	60kg	87	Recycle
2	PC	0.0132	0.08	Recycle

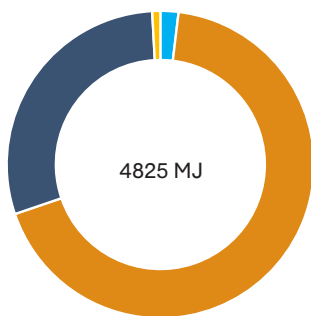
Additives	Yes/No
Flame retardant	No
UV stabiliser	Yes
Anti-microbial	No
Other	No

Summary

Phase	Total
Product (kg CO ₂)	198kg CO ₂
Total energy (MJ)	4825 MJ
Recycled content (%)	40%
Recyclability (%)	100%
Total packaging (kg)	4kg CO ₂
Life warranty	25 years
FSC	n/a

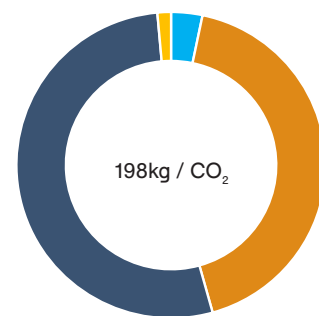
Energy footprint [%]

Transport	●	0.3
Materials	●	69
Manufacturer	●	30
Disposal	●	0.9
Total		4825 MJ



Carbon footprint [%]

Transport	●	0.5
Materials	●	44
Manufacturer	●	54
Disposal	●	1.50
Total		198g / CO₂



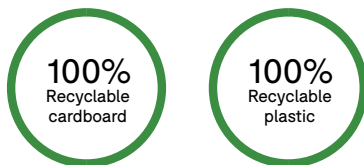
RYNO[®] WALL BED

ECO AUDIT

Chemical compliance

Name	Yes/ No
REACH	✓
RoHs	✓
Free from PVC, heavy metals, phthalates	✓
Free from Persistent Organic Pollutants (POPs)	✓

Packaging information



As part of our delivery service, packaging is collected, returned to Pineapple and recycled accordingly.

Afterlife plan

Disassembly instructions: Remove floor fixings. Place in recycling collection with Pineapple.

Replace plan: N/A

Repair plan: N/A

Environmental statement

Our commitment to sustainability is demonstrated in our **ISO 14001:2015** award, our **FSC[®] Chain of Custody certificate INT-COC-001353** and licence code **FSC-C015370**. In addition, we are certified under PEFC Chain of Custody licence code **PEFC/16-37-982**.

The environment is everyone's responsibility and we do our part by endeavouring that all of our timber originates from responsibly managed forests. As supporters of the tradition of good forest management, we purchase only suitably certified timber wherever possible.

Products in our Ryno[®] range are made from 99% low-density polyethylene which is completely recyclable. When the products reach the end of their useful life, they can be returned to us, ground down into small granules and used to create new pieces of furniture.

Environmental product analysis

Data collected has been analysed and calculated by the Materials & Sustainability team.

Certification

Description	Accreditation
Quality Assurance	ISO 9001 (UKAS accredited)
Environmental Management	ISO 14001 (UKAS accredited)
Sustainability	FISP
Chain of Custody	FSC [®] and PEFC

