

**RYNO<sup>®</sup>**

Wall

Bed



**Pineapple**



Designed with ergonomics in mind, one side of the Ryno Wall Bed is angled outwards, making it easier for users to stand up from the bed. This feature also improves access for caregivers, allowing them to stand closer to the bed when delivering care, reducing the likelihood of back injuries.

The straight side allows the bed to be fitted flush against the wall, minimising concealment opportunities. Where required, the Ryno Wall bed can be customised for compatibility with common coved flooring systems to minimise gaps between the bed and the wall.

Like all Ryno products, the Wall Bed is rotationally moulded to form a single piece with no joints or seams which would otherwise be a point of weakness. The single-piece construction also minimises concealment opportunities as well as making the product 100% waterproof.

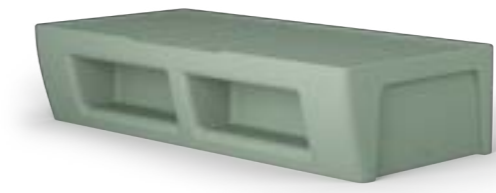
The Ryno Wall Bed is available with or without storage compartments, and is available in 14 versatile colours.




# RYNO<sup>®</sup> WALL BED



**Ryno wall bed without storage**  
**1RYB-F**  
 480H | 2050L | 1010W (mm)  
 Weight: 60kg



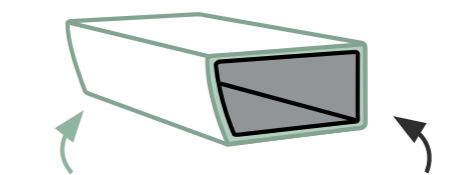
**Ryno wall bed with storage**  
**1RYBS-F**  
 480H | 2050L | 1010W (mm)  
 Weight: 60kg

 Lifetime guarantee	 Waterproof
 Fire retardant	 100% LDPE

*Straight side allows the bed to be fitted flush against a wall*

## KEY FEATURES

- Flared side provides improved patient mobility and access to caregivers
- Straight side allows the bed to be fitted flush against a wall
- Compatible with covered flooring (please specify at point of order)
- 100% waterproof construction with hygienic wipe-clean surface
- Strength and stability tested for severe contract use



**Exterior:**  
 Choose from 14 versatile shades

**Interior:**  
 Recycled content (40% of total)

## OPTIONS

- Floor fixing solution
- Anti-concealment base plate
- 14 versatile shell colours, including our OceanGreen colour (weight: 65kg)

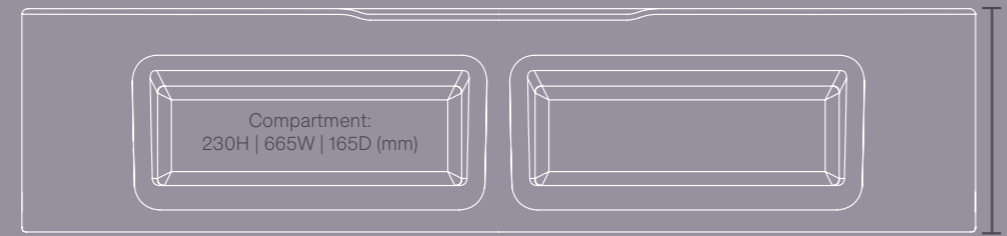
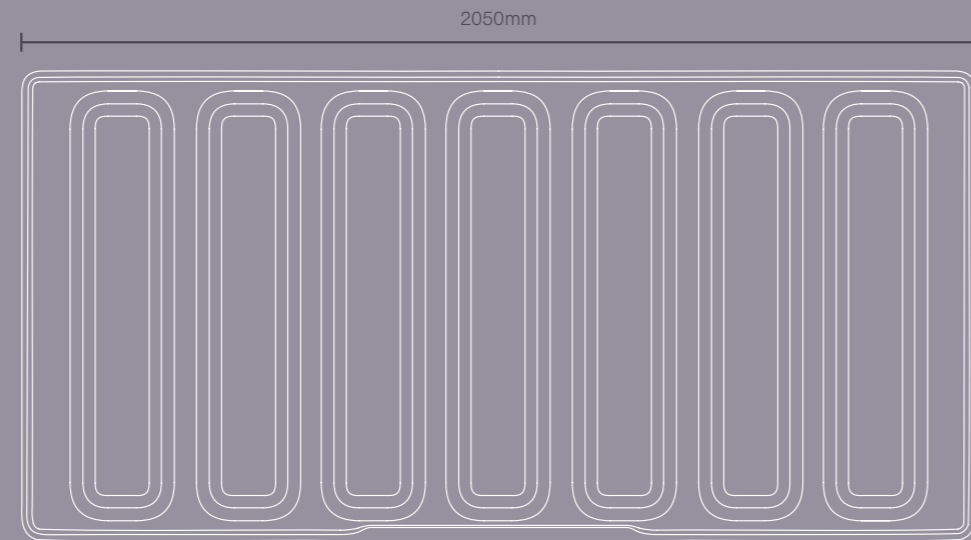
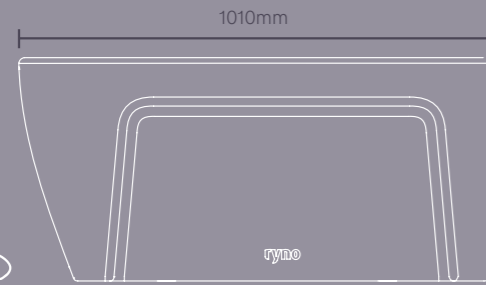
← Core colour

Where required, the Ryno Wall bed can be customised for compatibility with common covered flooring systems to minimise gaps between the bed and the wall.

Please discuss your requirements at point of order.



*Flared on one side to provide improved patient mobility and access to caregivers*



# See for yourself...

To arrange a demonstration or book a visit to our showroom, please call +44 (0)1622 237830

Pineapple, Westmead, Aylesford, Maidstone, Kent, ME20 6XJ

T	+44 (0)1622 237830
E	<a href="mailto:sales@pineapplecontracts.com">sales@pineapplecontracts.com</a>
W	<a href="http://uk.pineapplecontracts.com">uk.pineapplecontracts.com</a>

**Pineapple**