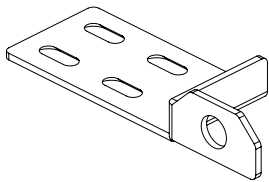
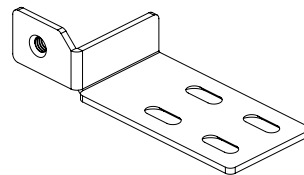


# RYNO<sup>®</sup> MODULAR → LINKING BRACKET PART 1



BRACKET A



BRACKET B

## REQUIRED ITEMS

- 2 x Bracket A
- 2 x Bracket B
- 16 x M6 Threaded Hex Drive Insert Fixing
- 16 x M6 x 20 Countersunk Security Bolt
- Power Drill
- Hex Magnetic Bit Holder
- Hex Magnetic Bit Extention (300mm+)
- TX30 Magnetic Screwdriver Bit
- TX45 magnetic Screwdriver bit
- 3mm Dowel Drill Bit
- 7.5mm Dowel Drill Bit



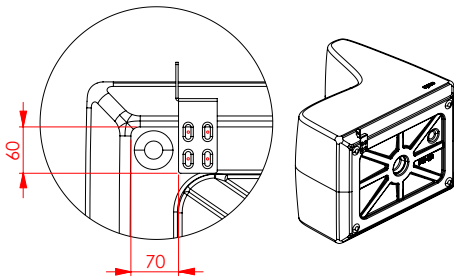
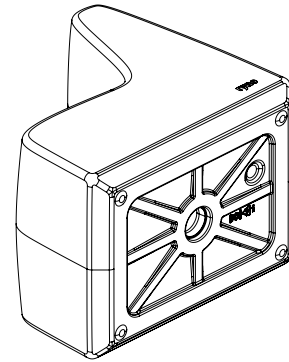

+44 (0)1622 237830  
sales@pineapplecontracts.com

**Pineapple**

# RYNO<sup>®</sup> MODULAR → LINKING BRACKET PART 1

## 01

Turn the left-hand Ryno Modular section 90 degrees, so that it is lying on its flat side.

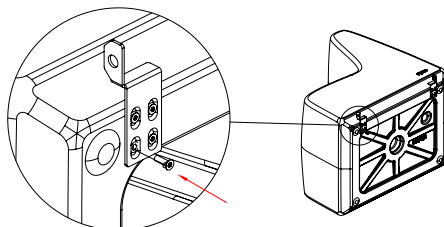
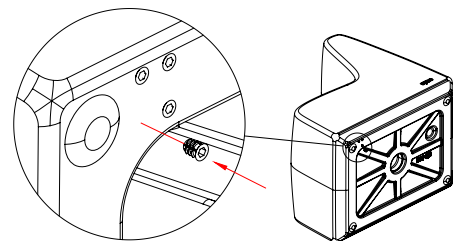


Using **Bracket A**, measure and mark out the fixings points. Ensure that the marked points sit centrally within each of the x4 slots.

## 02

## 03

Using a drill, drill pilot holes into the x4 marked-out points. Insert a **M6 threaded hex drive insert fixing** into the x4 points, ensuring that the inserts are flush with the rotomolded surface.



Using **M6 security bolts**, secure **Bracket A** to the underside of the ryno modular. Ensure that the countersunk head sits centrally within each of the bracket slots.

## 04

T  
E

+44 (0)1622 237830

sales@pineapplecontracts.com

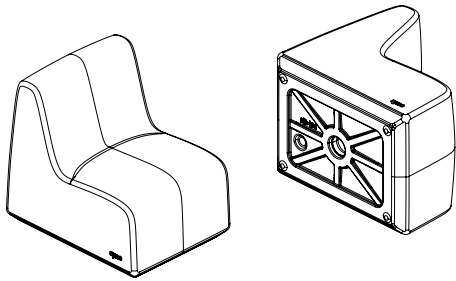
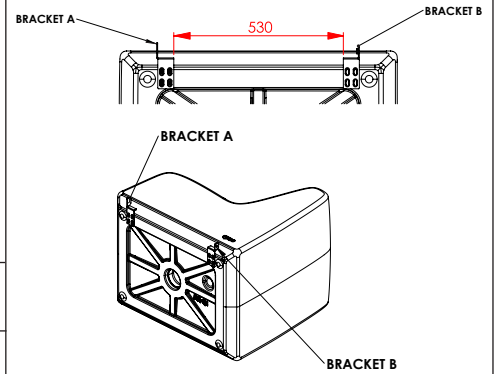
# Pineapple

# RYNO<sup>®</sup> MODULAR → LINKING BRACKET PART 1

## 05

Using **Bracket B**, measure and mark out the fixings points. Ensure that the marked points sit centrally within each of the x4 slots.

Repeat steps 2-4 to install **Bracket B**.

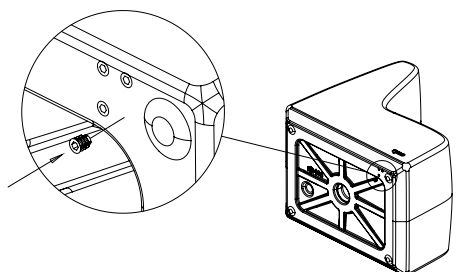
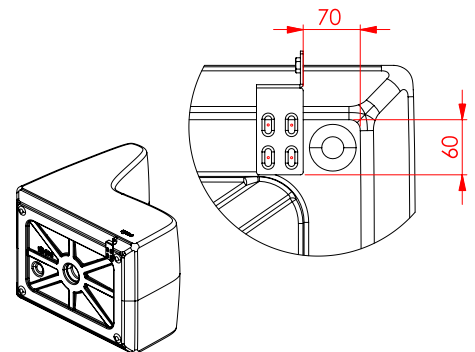


Turn the right-hand Ryno modular section 90 degrees, so that it is lying on its flat side.

## 06

## 07

Using **Bracket B**, measure and mark out the fixings points. Ensure that the marked points sit centrally within each of the x4 slots



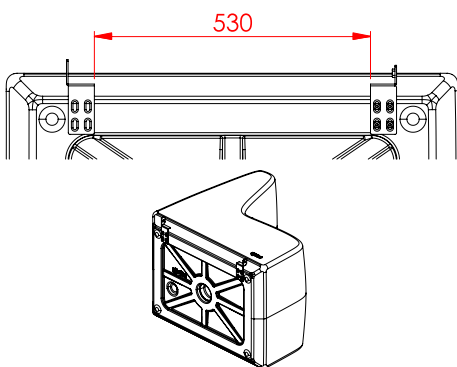
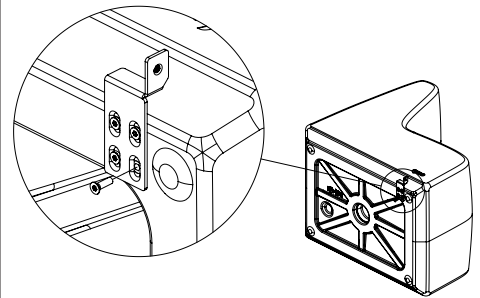
Using a drill, drill pilot holes into the x4 marked-out points. Insert a 6 threaded hex drive insert fixing into the x4 points, ensuring that the inserts are flush with the rotomolded surface.

## 08

# RYNO<sup>®</sup> MODULAR → LINKING BRACKET PART 1

09

Using **M6 security bolts**, secure **Bracket B** to the underside of the ryno modular. Ensure that the countersunk head sits centrally within each of the bracket slots.



Using **Bracket A**, measure and mark out the fixings points. Ensure that the marked points sit centrally within each of the x4 slots.

Repeat steps 7-9 to install **Bracket A**.

10

# DISCLAIMER

	<ul style="list-style-type: none"><li>→ Ensure the proper and adequate hardware is used to secure furniture</li><li>→ Ensure fixings are appropriate for the anchoring material</li><li>→ Use fixings of an appropriate strength and consider using security fixings in challenging environments</li><li>→ Consider using high strength thread-locker on fixings in challenging environments</li><li>→ Ensure all gaps are sealed with the appropriate anti-pick mastic after product installation if necessary</li><li>→ Please read all instructions carefully to ensure proper installation. Failure to read and follow instructions may result inadequate product installation and void of warranty</li><li>→ Pineapple shall not be held liable for any consequences caused by the improper installation of products to the installer or the end user</li></ul>



+44 (0)1622 237830

[sales@pineapplecontracts.com](mailto:sales@pineapplecontracts.com)

**Pineapple**