

RYNO[®]

Modular
Seating



Pineapple



Flexibility and adaptability are key design principles for healthcare spaces. Over time, care provision can evolve, and patient needs can change, leading to a shift in the way spaces are used.

Furniture that can be easily reconfigured or repurposed allows healthcare facilities to adjust layouts quickly and cost-effectively without requiring significant structural changes.

Whether you're creating a quiet corner to minimise distraction, or encouraging communication and sharing, the flexibility of the Ryno® modular range can help.

With a variety of dynamic configurations, this stylish range can be securely connected together with an optional linking bracket.


Moulded from a single piece of material, each modular item is designed to minimise ligature risks, while providing no concealment opportunities.

Additional weight can be added to each product to prevent it from being picked up, creating safer environments for patients and staff. 100% waterproof and UV-stabilised, the range is suitable for indoor and outdoor use, and is available in 15 versatile colours.




RYNO[®] MODULAR

3
●
●

Seat static weight tested to  500KG




Lifetime guarantee


Weighted to deter misuse


Fire retardant


40% recycled
100% recyclable


Weatherproof


Optional linking bracket

KEY FEATURES

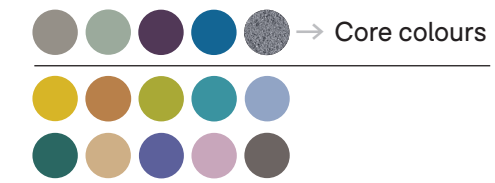
- Versatile modular design allows a variety of reconfigurable shapes
- Integrated drainage channel allows water to run off
- Sloped arms and low back designed to minimise ligature risks
- Ergonomically designed to give excellent comfort
- Hygienic wipe-clean surface

- Waterproof, UV stabilised material - suitable for outdoor use
- Strength and stability tested for severe contract use
- Made with 40% recycled content
- 100% recyclable material

One-piece design cannot be disassembled or weaponised

OPTIONS

- Available with additional weighting
- Optional linking bracket (please note; linking bracket is not available with weighted options)
- 15 versatile shell colours



RYNO[®] MODULAR



Armchair (right arm)
1RYM-200
835H | 850W | 870D (mm)
Seat height: 435mm
Product weight: 25kg
Weighted option: 69kg



Curved chair (wide front)
1RYM-500
830H | 885W | 975D (mm)
Seat height: 435mm
Product weight: 18kg
Weighted option: 62kg



Curved chair (narrow front)
1RYM-600
830H | 885W | 975D (mm)
Seat height: 435mm
Product weight: 18kg
Weighted option: 62kg



Chair
1RYM-300
835H | 650W | 870D (mm)
Seat height: 435mm
Product weight: 20kg
Weighted option: 64kg



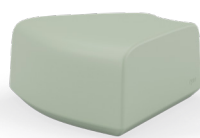
Armchair (left arm)
1RYM-100
835H | 850W | 870D (mm)
Seat height: 435mm
Product weight: 25kg
Weighted option: 69kg



Armchair
1RYM-400
835H | 1052W | 870D (mm)
Seat height: 435mm
Product weight: 27kg
Weighted option: 71kg

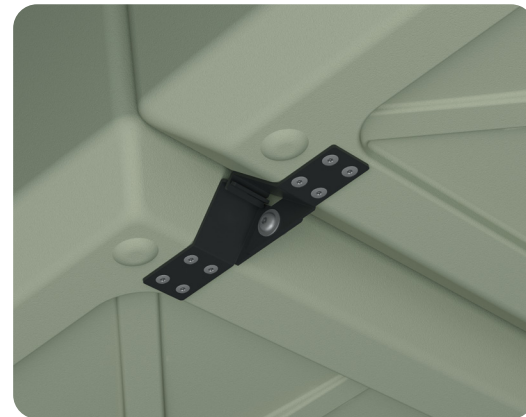


Square
1RYM-700
436H | 870W | 870D (mm)
Product weight: 20kg
Weighted option: 64kg



Wedge
1RYM-800
420H | 885W | 975D (mm)
Product weight: 15kg
Weighted option: 59kg

Optional linking bracket



*Integrated drainage channel
allows water to run off*





typo



See for yourself...

To arrange a demonstration or book a visit to our showroom, please call +44 (0)1622 237830

Pineapple, Westmead, Aylesford, Maidstone, Kent, ME20 6XJ

T +44 (0)1622 237830

E sales@pineapplecontracts.com

W uk.pineapplecontracts.com

Pineapple